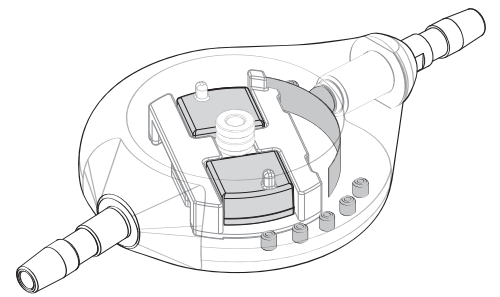


Polaris® Adjustment

ADJUSTMENT KIT

Ref. : PAK2



LOCATOR

The centre cut-out area is in the form of an imprint of the valve. The Locator must be positioned on the skin, with the green arrow showing the direction of the flow. The Locator houses the Compass and the Magnet in turn.

COMPASS

The Compass needle makes it possible to detect the centre of the Valve and the position of the rotor (for reading the adjustment pressure). Its operation is optimal when it is used **horizontally**.

MAGNET

The Magnet generates a specific magnetic field for unlocking the Valve. It is therefore used to adjust the pressure setting and must be **perfectly positioned** above the Valve to unlock it.

DEMONSTRATION VALVE

A leather-covered Demonstration Valve is made available for training in adjusting the Valve.

QUICK START GUIDE

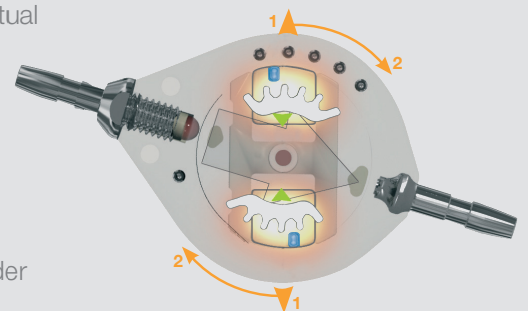
A guide displaying the key stages of the adjustment is stored in the cover of the kit.

The **Polaris Valve** is fitted with an efficient magnetic lock, based on the mutual magnetic attraction between the two micro-magnets of its rotor.

To adjust the Polaris Valve successively the instruments must be perfectly positioned above the valve in order to:

- 1 • **Unlock** the valve
- 2 • **Adjust** the position of the rotor

To optimize the success of the adjustment, the valve must be implanted under less than **8 mm of tissue**, in contact with a **bone surface** and **sutured**.



NOTE

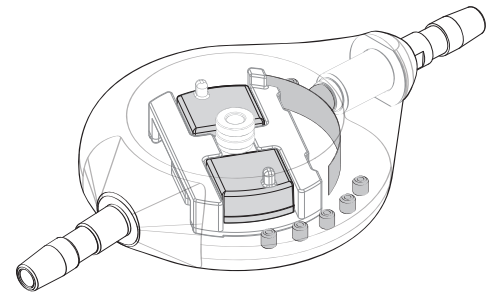
The PAK2 adjustment kit is dedicated to the adjustment of the **Polaris** valve.

To adjust the Sophy® Mini (SM8) adjustable valve, use the SAK adjustment kit (photo opposite).

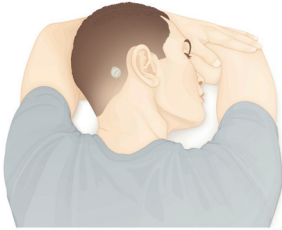
If there is any doubt about the valve model, the patient card or an X-ray film may be used.



Polaris[®] Adjustment

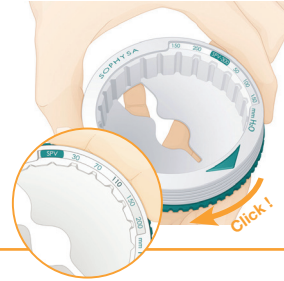


PREPARATION



POSITIONING THE PATIENT

Position the patient so that the **valve is horizontal**. Consider the patient's comfort and also guaranteeing there is a clear area around the valve.



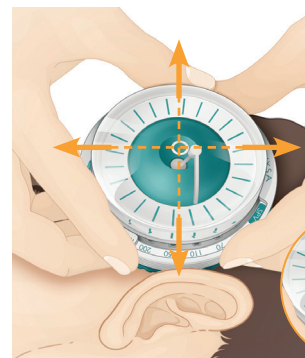
LOCATOR PREPARATION

4 Polaris models are available. The **rotating ring** on the locator enables the correct pressure range to be displayed.

READING



Align the imprint of the locator with the axis of the valve connectors by palpating them through the skin. The green arrow represents the **direction of the flow**.



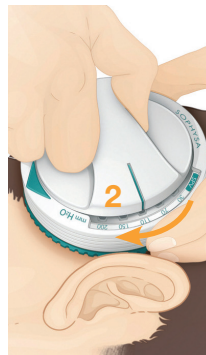
Insert the compass and perform **planar and horizontal movements** of the Compass-Locator assembly to **centre** the needle in the target. **Align** the needle on the nearest pressure setting.

Perfect centering

ADJUSTMENT



Insert the magnet with the **mark aligned** on the pressure setting read. The valve then unlocks automatically.



Turn the magnet until the desired pressure setting is reached.



Confirm the new pressure setting by reinserting the compass. Write the new pressure on the patient card.

ADJUSTMENT DIFFICULT?



If unlocking is difficult (deposits) a **back-and-forth** movement may be made with the handle of the Magnet. Hold the locator firmly with the other hand.

Only the handle of the magnet is mobilized. Then it is **recentered** to continue the pressure setting adjustment.



The valve is adjusted on an extreme position to re-orient the instruments.

If it is difficult to determine the orientation of the valve and no recent X-ray is available to confirm the initial pressure setting, consider the **Extreme Position Method** (see the instructions for use)